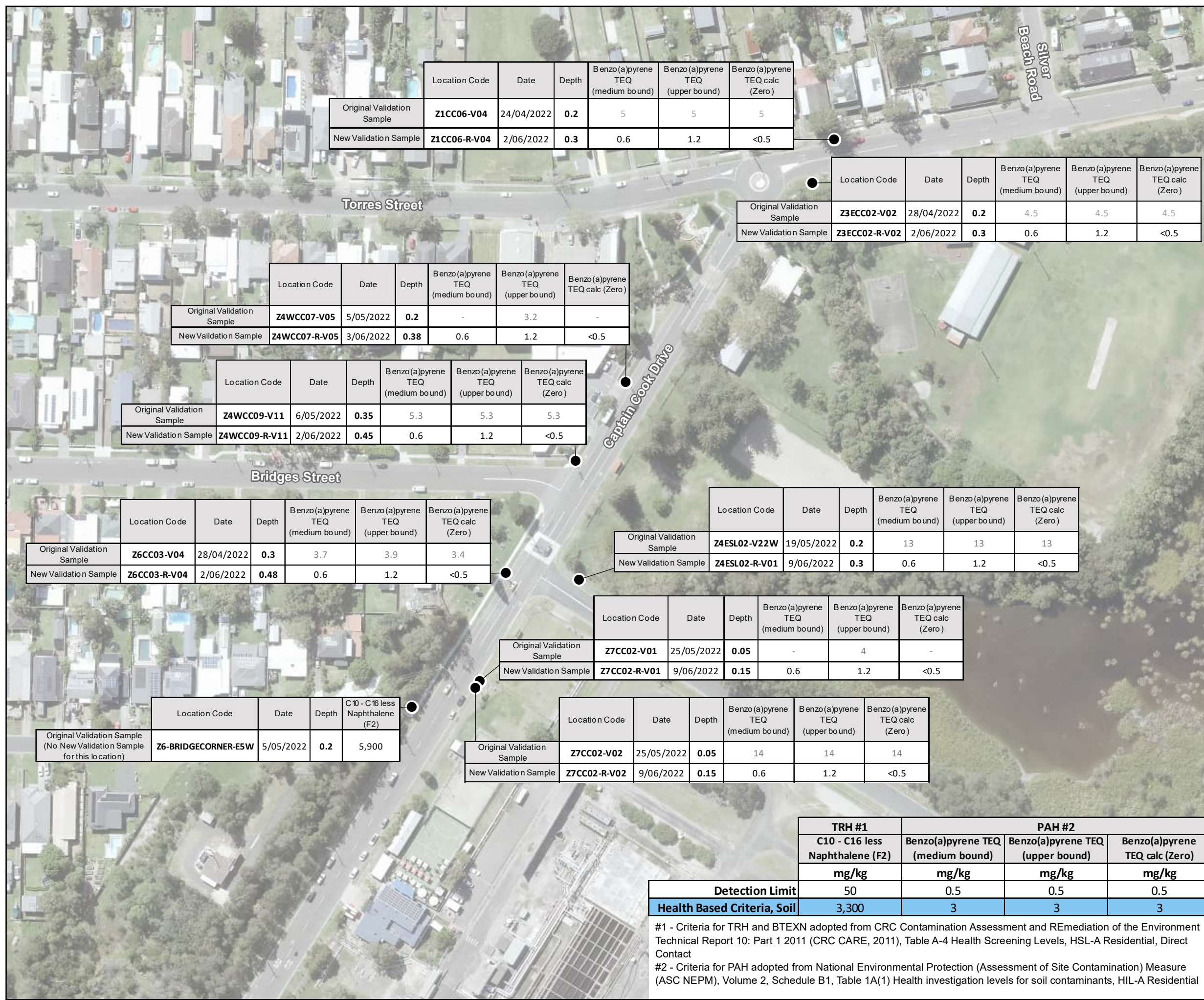
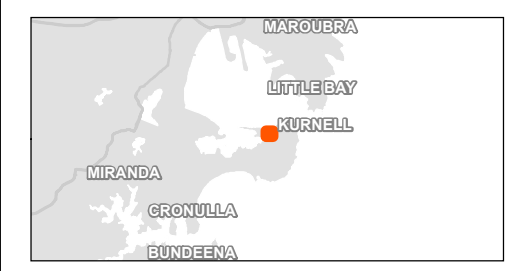


Figure 1.9
Exceedance and Revalidated Locations



Legend
● Sample Locations



Coordinate system: GDA2020 MGA Zone 56
Scale ratio correct when printed at A3
1:1,500 Date: 8/07/2022

Data sources: Ampol, Metromap, NSW Spatial Services.

© WSP Australia Pty Ltd ("WSP") Copyright in the drawings, information and data recorded ("the information") is the property of WSP. This document and the information are solely for the use of the authorised recipient and this document may not be used, copied or reproduced in whole or part for any purpose other than that which it was supplied by WSP. WSP makes no representation, undertakes no duty and accepts no responsibility to any third party who may use or rely upon this document or the information. NCSI Certified Quality System to ISO 9001. © APPROVED FOR AND ON BEHALF OF WSP Australia Pty Ltd.

	TRH #1	PAH #2		
	C10 - C16 less Naphthalene (F2)	Benzo(a)pyrene TEQ (medium bound)	Benzo(a)pyrene TEQ (upper bound)	Benzo(a)pyrene TEQ calc (Zero)
	mg/kg	mg/kg	mg/kg	mg/kg
Detection Limit	50	0.5	0.5	0.5
Health Based Criteria, Soil	3,300	3	3	3

#1 - Criteria for TRH and BTEXN adopted from CRC Contamination Assessment and REmediation of the Environment Technical Report 10: Part 1 2011 (CRC CARE, 2011), Table A-4 Health Screening Levels, HSL-A Residential, Direct Contact
#2 - Criteria for PAH adopted from National Environmental Protection (Assessment of Site Contamination) Measure (ASC NEPM), Volume 2, Schedule B1, Table 1A(1) Health investigation levels for soil contaminants, HIL-A Residential