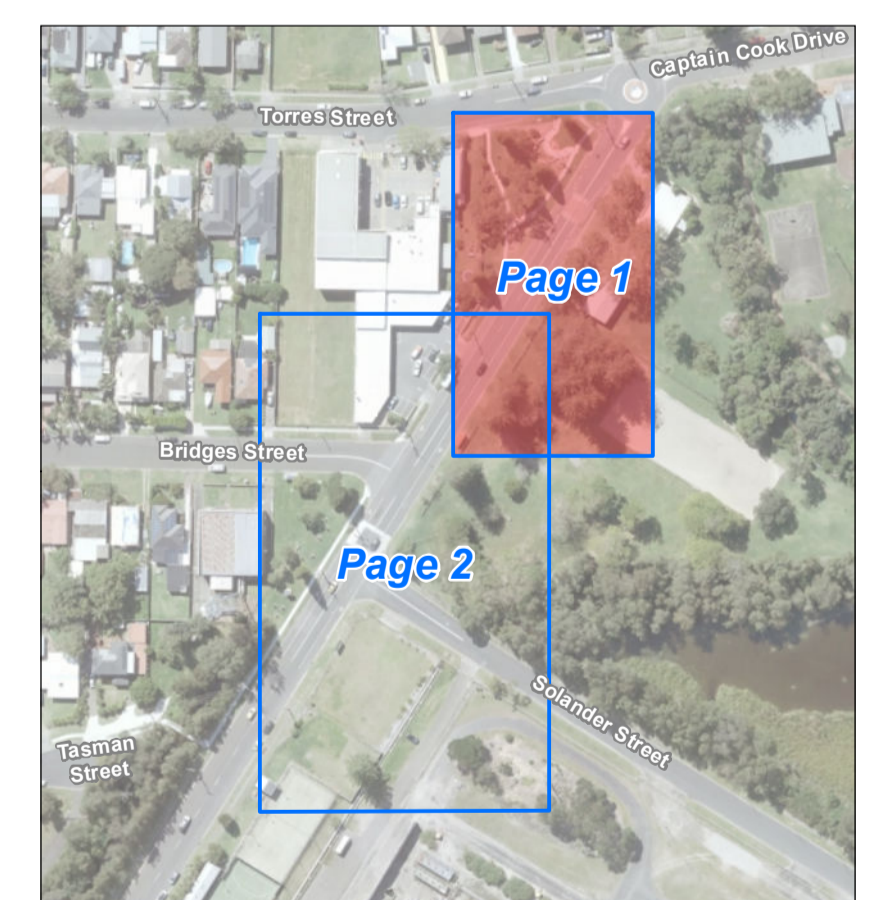


Legend

- Samples (21/04/22 - 27/05/22)
- Samples (28/05/22 - 15/06/22)
- Remediation Zone 4 East
- Remediation Zone 4 West



Coordinate system: GDA2020 MGA Zone 56

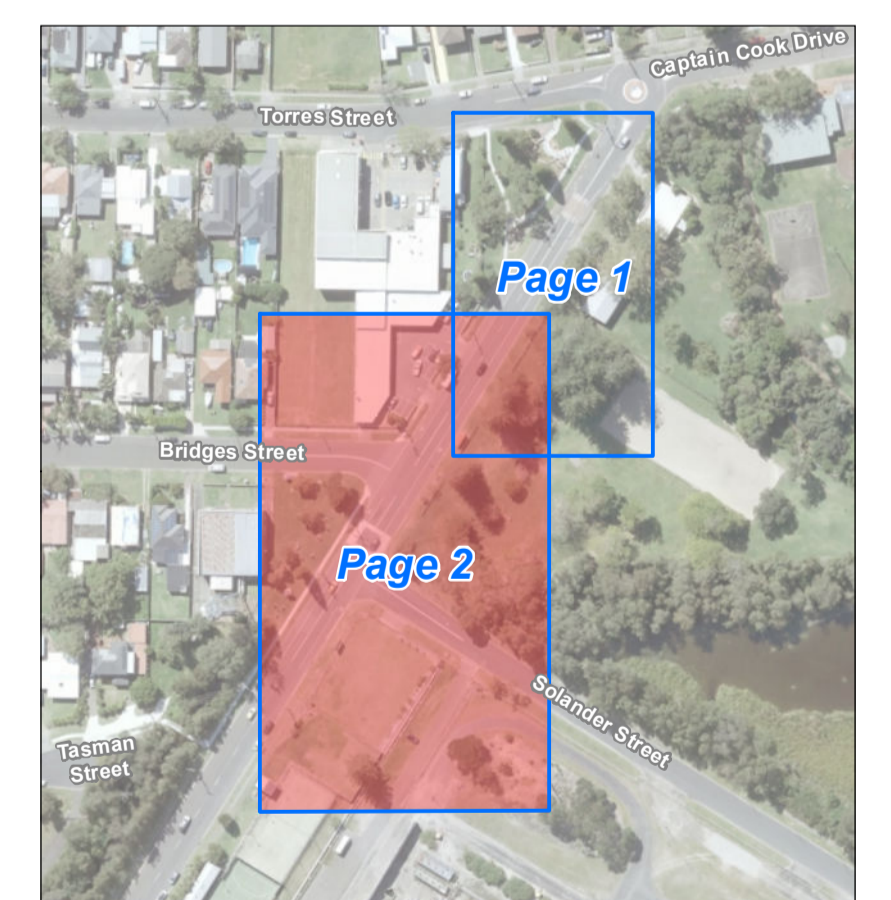
Scale ratio correct when printed at A1
1:100 Date: 8/07/2022
Author: J.Greaves QA: A.Labryere

Data sources: Metronmap Aerial Imagery, NSW Department of Planning and Environment, Geoscience Australia, Ampol

© WSP Australia Pty Ltd 2022. Copyright in the content, information and data contained in this document is the property of WSP Australia Pty Ltd. All rights reserved. This document is intended for the use of the client and is not to be distributed, copied, reproduced, or otherwise used without the prior written consent of WSP Australia Pty Ltd. WSP Australia Pty Ltd is not responsible for any loss or damage arising from the use of this document. WSP Australia Pty Ltd is a registered company in Australia. ABN 62 623 123 456. WSP Australia Pty Ltd

Legend

- Remediation Zone
Samples (21/04/22 -
27/05/22)
- Remediation Zone
Samples (28/05/22 -
15/06/22)
- Remediation Zone 4 East
- Remediation Zone 4 West



0 5 10 Meters

Coordinate system: GDA2020 MGA Zone 56
Scale ratio correct when printed at A1
1:150 Date: 8/07/2022
Author: J.Greaves QA: A.Labryere

Data sources: Metromap Aerial Imagery, NSW Department of Planning and Environment, Geoscience Australia, Ampol

© WSP Australia Pty Ltd 2022. All rights reserved. This document is the property of WSP Australia Pty Ltd. It is to be used only for the purposes for which it was prepared. No part of this document may be reproduced, stored in a retrieval system, or transmitted, in any form or by any means, without the prior written permission of WSP Australia Pty Ltd. WSP Australia Pty Ltd is not responsible for any loss or damage arising from the use of this document.

